

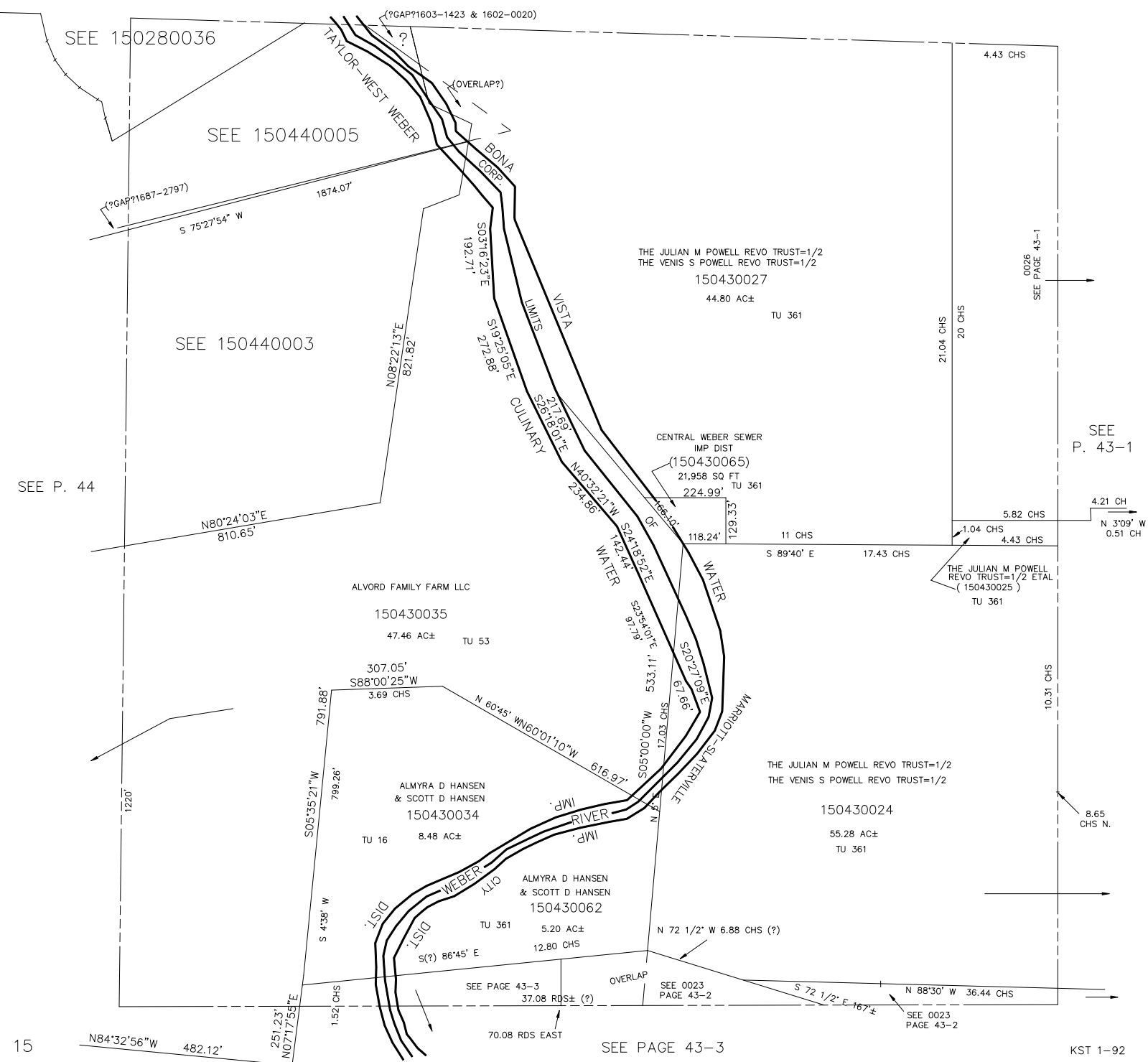
SECTION 15, T.6N., R.2W., S.L.B. & M.

IN MARRIOTT-SLATERVILLE CITY & WEBER COUNTY

TAXING UNIT: 53,361

SCALE 1" = 200'

SEE PAGE 29-3



SEE P. 44

SEE 150280036

SEE 150440005

SEE 150440003

4.43 CHS

21.04 CHS
20 CHS

THE JULIAN M POWELL REVO TRUST=1/2
 THE VENIS S POWELL REVO TRUST=1/2
 150430027
 44.80 AC±
 TU 361

CENTRAL WEBER SEWER
 IMP DIST
 (150430065)
 21,958 SQ FT
 TU 361

ALVORD FAMILY FARM LLC
 150430035
 47.46 AC±
 TU 53

ALMYRA D HANSEN
 & SCOTT D HANSEN
 150430034
 TU 16
 8.48 AC±

ALMYRA D HANSEN
 & SCOTT D HANSEN
 150430062
 TU 361
 5.20 AC±
 12.80 CHS

THE JULIAN M POWELL REVO TRUST=1/2
 THE VENIS S POWELL REVO TRUST=1/2
 150430024
 55.28 AC±
 TU 361

0026
SEE PAGE 43-1

SEE P. 43-1

4.21 CH
N 3°09' W
0.51 CH

10.31 CHS

8.65 CHS N.

SEE PAGE 43-3
37.08 RDS± (?)

OVERLAP
SEE 0023
PAGE 43-2

SEE 0023
PAGE 43-2

15 N84°32'56" W 482.12'

251.23'
N07°17'55" E

70.08 RDS EAST

SEE PAGE 43-3